



# HUMVEE SABER™

## REINFORCED SECURITY CONCEPT

**Redefining Survivability** on a Rugged & Capable Light Tactical Vehicle



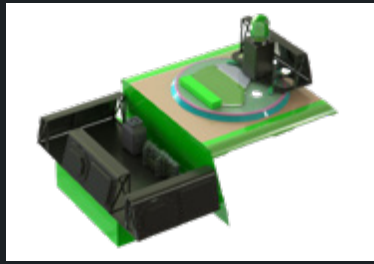
360° kinetic and blast protection increase **survivability** in this light and nimble vehicle, ensuring versatility and reliability in challenging operational environments



Leveraging the proven and established HUMVEE platform, this vehicle provides maximum **commonality**, simplified maintenance, and cost-effective fleet sustainment



Ready to meet multiple mission sets, this vehicle is **transportable** by land, sea, and air



### INCREASED SURVIVABILITY

360° kinetic energy threat protection.

Under-vehicle blast threat protection for front and rear wheels and center undercarriage.

Blast seats, floating floor and transparent armor.

### MOBILE COUNTER UAS

Elta North America's Modular Anti-Drone System – Kit (MADSK) On The Move (OTM) Defense in Depth is integrated onto this concept vehicle. MADSK OTM is designed to perform all aspects of the CUAS kill chain, conducting Detect, Track, ID, and Deter/Defeat of Group 1-3 UAS systems while operating at maneuver speed.

### ENHANCED PROTECTION

In collaboration with IMMI, AM General integrated the Mbrace® system on this concept vehicle. The Mbrace airbag system, integrated into a multi-point seat belt, works in a fraction of a second to protect a soldier's head and neck.

### INNOVATIVE ARMOR & SEATING

AM General partnered with ArmorWorks to integrate ArmorVision™ and Advanced Modular Blast Seats. ArmorVision is a lighter weight and more affordable direct drop-in replacement for outdated transparent armor, while the blast seats provide superior blast protection and durability.

### OFF ROAD MOBILITY

Exceptional speed, mobility and agility across any rugged terrain in all weather conditions.

### VERSATILE CONFIGURATIONS

2-, 4- and 6-passenger variants plus payload capacity for personnel and mission equipment.

### LOW COST LOGISTICS

Based on the proven HUMVEE 13-Series chassis, the HUMVEE Saber offers maximum commonality, simplified maintenance, and streamlined fleet sustainment.



## HUMVEE SABER SPECIFICATIONS

#### GVW

6,396 kg. (14,100 lb.)

#### POWERTRAIN

205 hp 6.5L V8 turbocharged diesel engine

4-speed electronically controlled transmission

2 Speed, High 1:1, Low 2.72:1 transfer case

95 L (25 gal.) fuel capability

402 km (250 miles) fuel range

#### SAFETY

Anti-Lock Brake System (ABS) (optional)

Electronic Stability Control (ESC)

Traction control

#### ELECTRICAL

Dual Voltage 14V/28V

#### EXTERIOR

Turret ring (optional)

Rear access door

#### MOBILITY

Heavy duty suspension

48° angle of approach

37° angle of departure

25° ramp breakover angle

60% grade capability

30% side slope capability

30.5 cm (12 in.) vertical obstacle

#### TRANSPORTABILITY

Highway, rail, marine, and air

In collaboration with:



105 N. Niles Ave  
South Bend, IN 46617  
(574) 237-6222  
[www.amgeneral.com](http://www.amgeneral.com)